



Outdoor Workers Safety  
What is wrong with this picture?



Outdoor Workers Safety - Answer Key  
What is wrong with this picture?

Outdoor Workers – Answer Key



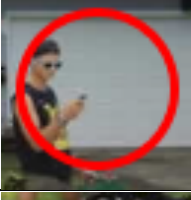
- The ladder isn't set up properly



- The worker is exposed to a possible musculoskeletal injury (MSI) due to poor body positioning/mechanics for the work being done
- The worker isn't wearing approved eye protection



- The workers are exposed to slipping and tripping hazards
- The chainsaw isn't being maintained according to manufacturer's instructions



- The worker is wearing ear buds
- One of the workers isn't wearing hearing protection
- The workers aren't wearing gloves/hand protection



- The workers aren't wearing appropriate safety footwear



- The traffic delineator should be on the road

|     |  |
|-----|--|
| 1.  |  |
| 2.  |  |
| 3.  |  |
| 4.  |  |
| 5.  |  |
| 6.  |  |
| 7.  |  |
| 8.  |  |
| 9.  |  |
| 10. |  |
| 11. |  |
| 12. |  |
| 13. |  |
| 14. |  |
| 15. |  |
| 16. |  |
| 17. |  |
| 18. |  |