

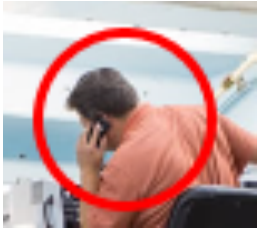


Mobile Equipment Safety
What is Wrong with this Picture?



Mobile Equipment Safety - Answer Key
What is wrong with this picture?

Mobile Equipment – Answer Key



- The operator has his hand on the blade adjustment handle, he shouldn't be operating anything while the tank is being changed.
- While standing, depending on the proximity to the ceiling, the driver should be wearing a bump cap
- The operator should not be on the phone while using the machine



- The operator's towel isn't properly stored --- it's leaning against the left side of the machine



- Proper housekeeping is key to reducing slipping and tripping hazards.
- The equipment operation area should be physically separated from the public and the other workers



- Propane tanks should be changed outdoors, not inside a building (a confined space).
- The operator is using a poor tank-lifting technique. He should be standing directly in front of the machine, with no overreaching.
- The lower tank is not secured properly: it's hooked up with a pin on the machine. The tanks should not be hooked up when they're not secured, because the tank valves might actually be open



- The operator isn't wearing gloves while changing the propane tank. (They are in his pocket.)
- The workers should be wearing steel-toed shoes or boots. (The ice conditioner, if it drops, weighs about 1000 pounds.)

1.	
2.	
3.	
4.	
5.	
6.	
7.	
8.	
9.	
10.	
11.	
12.	
13.	
14.	
15.	
16.	
17.	
18.	