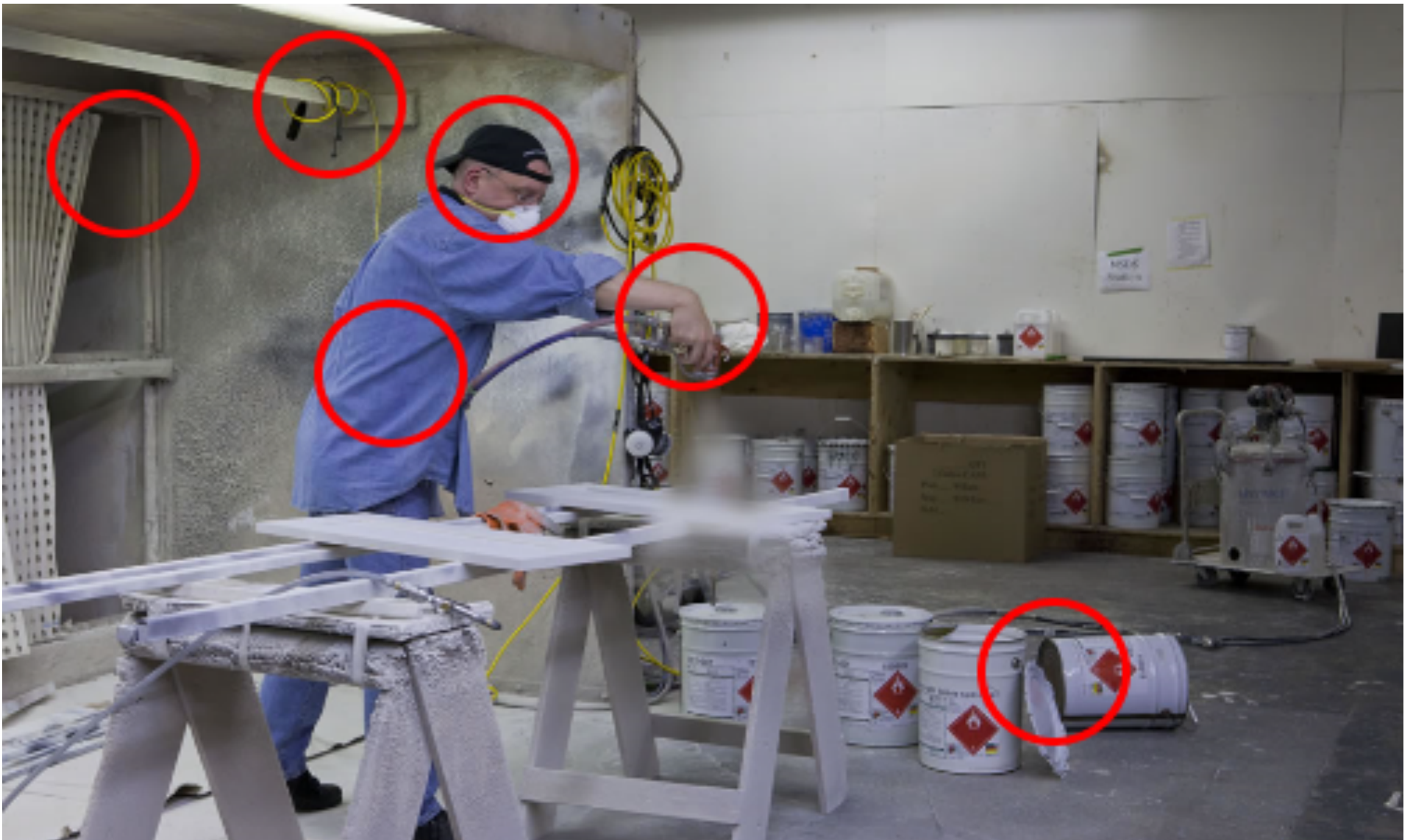




Painting/Flammable Liquids Safety  
What is wrong with this picture?



Painting/Flammable Liquids Safety  
What is wrong with this picture?

Painting/Flammable Liquids Safety – Answer Key



- The worker is spraying outside the spray booth
- The baffles in the spray booth are not installed properly
- The spray booth presents a tripping hazard, with wood strips on the floor



- A number of fire hazards are present, the electrical cord inside the spray booth looks like it has been “patched up” and is not safe to use



- The worker is wearing a dust mask and should be wearing a half-mask respirator with organic vapor cartridges at a minimum. The proper respirator is hanging outside of the spray booth
- The worker is not wearing eye protection, such as safety goggles
- The worker should be wearing face protection, such as a face shield



- The worker is not wearing coveralls to protect his clothing. He is wearing street clothes while spraying. He is wearing his hat on backwards to protect his head



- This scenario requires the use of materials safety data sheets (MSDS)
- Ergonomics is an issue, the worker is leaning over his work and using the wrong wrist position



- Housekeeping is an issue, with pails of paint near the work area, a spray hose on the floor, and a box near the paint storage area, etc.
- A pail of flammable material without a lid is near the work area. The sprayer cart contains a jug of flammable solvent

1.	
2.	
3.	
4.	
5.	
6.	
7.	
8.	
9.	
10.	
11.	
12.	
13.	
14.	
15.	
16.	
17.	
18.	